



FRAMEWORK GUIDE

For Pitched Roofing (PR3)



WHY WORK WITH LHC?

These are the key reasons to work with LHC whether you're a public sector organisation looking for procurement solutions or a supplier with products or services to provide.

Knowledge and experience of procurement

Our organisation began half a century ago and over five decades we've developed and shaped our service to meet the evolving needs of our clients.

Recognised technical expertise

Our technical expertise is built on continuous research by our team of technical specialists who consult with clients on the outcomes they need and suppliers on the range of available solutions.

Commitment to better buildings and homes

Our ultimate goal is helping our clients deliver better environments for the communities they serve, a goal we support through our frameworks, that address every aspect of quality, and our selection of the most appropriate suppliers.

Fast and efficient procurement

Once LHC Appointed Companies are established for a framework, the process of calling off projects and commissioning work is very efficient. Terms and rates have been agreed and even when a mini competition is required, the majority of contractual arrangements have already been finalised. Project work can start quickly.

Financial gains

Working with LHC frameworks gives suppliers access to construction, refurbishment and maintenance projects of over £250,000,000 each financial year. Members who spend more than £250,000 on two or more frameworks in a year will benefit from a share in the LHC operating surplus.

WWW.LHC.GOV.UK/MEMBERSHIP

About this framework

The LHC Framework for pitched roofing is available to all local authorities, housing associations and other public sector bodies in England and Wales.

This framework provides the supply and installation of pitched roof coverings by specialist roofing contractors, including roof repairs, structural repairs and other pitched roofing works with a supported design service.

This OJEU compliant framework offers:

- The removal of existing roof covering including survey and design services.
- Supply and installation of various pitched roof covering systems and associated components.
- General scaffolding design and erection as per the building type
- Optional works include flat to pitch conversions and associated building works.

This framework has been established in strict compliance with UK Public Sector procurement rules for use by public sector bodies in the UK as detailed in the LHC buyer profile (www.lhc.gov.uk/buyerprofile) and as specified in the Contract Notice:

- 2016/S 027-043089 - London
- 2016/S 028-044644 - England
- 2016/S 028-044647 - Wales

About this tender

Interested suppliers were invited to complete a pre-qualification questionnaire, prepared and formatted in accordance with PAS 91:2013 ‘Construction pre-qualification questionnaires’, before inviting selected companies to complete an ITT and Offer Document.

Stage 1: Selection criteria

- Financial standing
- Compliance with EU/UK legislation
- Applicant’s organisation
- Quality management
- Sustainability and social inclusion
- Equal opportunities and diversity
- Health and safety
- Financial status and insurances
- Responses to questions using case studies to demonstrate capability, skills, experience and resources to deliver and maintain the high level of quality required by SPA for the delivery of works and installations

Stage 2: Invitation to tender

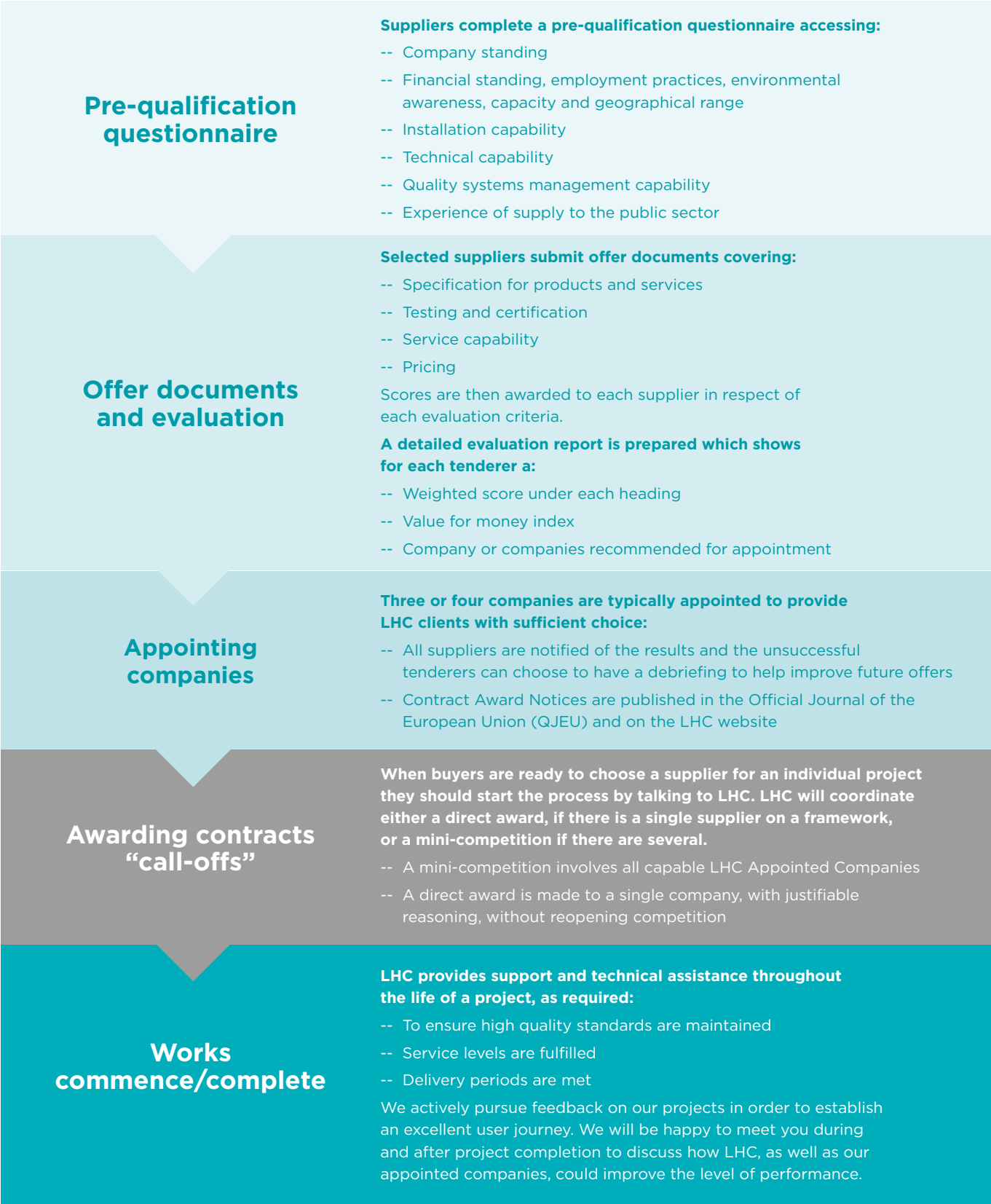
The companies that scored sufficient marks in the PQQ were invited to complete an offer document (invitation to tender).

The offer document provided detailed service and product specifications and sought a response from companies on their conformity to these requirements.



From pre-qualification to call-off contract

The diagram below shows the process an appointed company completes in order to service the needs of LHC clients/members. It also highlights the support LHC provides.



LHC Appointed Companies are selected based on price, essential requirements, a range of qualitative assessments and a structured interview

Award weighting criteria

The evaluation process comprised of four elements: pricing, service quality, service capability and quality of submission. Award weighting criteria are established on each individual framework and can be flexed to a clients/members individual needs. Full evaluation report is available upon request.



The service capability and service quality element consisted of:

- Survey, assessments, design and proposals (all call-off contracts)
- Project inception, survey, design, administration, removal, installation and completion services (procedures and processes that companies intend to employ)
- Pitched roof installation (full scope)
- Flat to pitch design, supply and installation included list of approved system manufacturers (including AMPs)
- Photovoltaics including integrated and bolt on system design and installation (including AMPs)
- Full scaffold breakdown schedules including towers, putlogs, hoists and climbers (including AMPs)

The framework in action

As well as providing compliance, quality and best value to clients/members, the LHC framework for pitched roofing supports a streamlined process from the award of a contract (call-off) to completion of a project.

Confirmed competitive market prices

Prices in place at call-off stage maintaining best value as established in the PQQ stage.

Quick and efficient procurement

Speedy access to LHC Appointed Companies and the options of a mini-competition or direct award to enable the final selection of a supplier or supplier(s) for a project.

Instant access to project data

Continuous access to information throughout the procurement process through the suppliers' on-line portal.

High quality standards

Standards of quality maintained throughout project through monitoring in accordance with ISO 9001 Quality Management System.

Service levels guarantee

Guaranteed service levels from inquiry to supply providing peace of mind that services and works will be conducted effectively.

Quick project starts

Enabled by pre-tendered procurement that reduces the cost and time input by public sector organisations and speeds up their access to companies.

Advice on design and regulatory compliance

Guidance on interpretation and conformity to statutory regulations and planning requirements.

Delivery periods guarantee

Guaranteed delivery periods that ensure services and works are delivered to meet work schedules.

Framework details

Our pitched roofing framework is designed to allow local and nationwide servicing specialist roofing contractors to install a high level specification roofing system, while offering our clients/members competitive prices. The scope and structure of the framework includes:

Essential Works:	Optional Works:
<div><div>-- Service – the removal of existing roof coverings, survey and design. Chosen manufacturer system products and design supported guarantees.</div><div>-- Supply and installation – pitched roof covering systems and associated components, supplied and supported by the chosen manufacturer and installation works by the chosen installer.</div><div>-- Roof covering systems – concrete, clay roof tiles, slates and underlay, (including battens), fall within the scope of BS requirements. Profiled sheet roof covering falls under BBA.</div><div>-- Scaffolding – general scaffolding design and erection as per the building type.</div></div>	<div><div>-- Flat to pitch – conversions and associated specialised building works (including calculations, design and guarantees). Although this was an optional choice for companies to include within the tender returns, a full list of prices (Approved Maximum Prices – AMPs) are available with a list of specialist flat to pitch companies.</div><div>-- Associated roofing works – general building items include:<div><div>-- Rainwater goods</div><div>-- Soffits and fascia boards</div><div>-- Timber repairs</div><div>-- PVC-U cover trims and boarding</div><div>-- Loft insulation</div><div>-- Renewable Energy Technologies (i.e.solar photovoltaic panels)</div><div>-- Liquid parapet guttering systems</div></div></div></div>

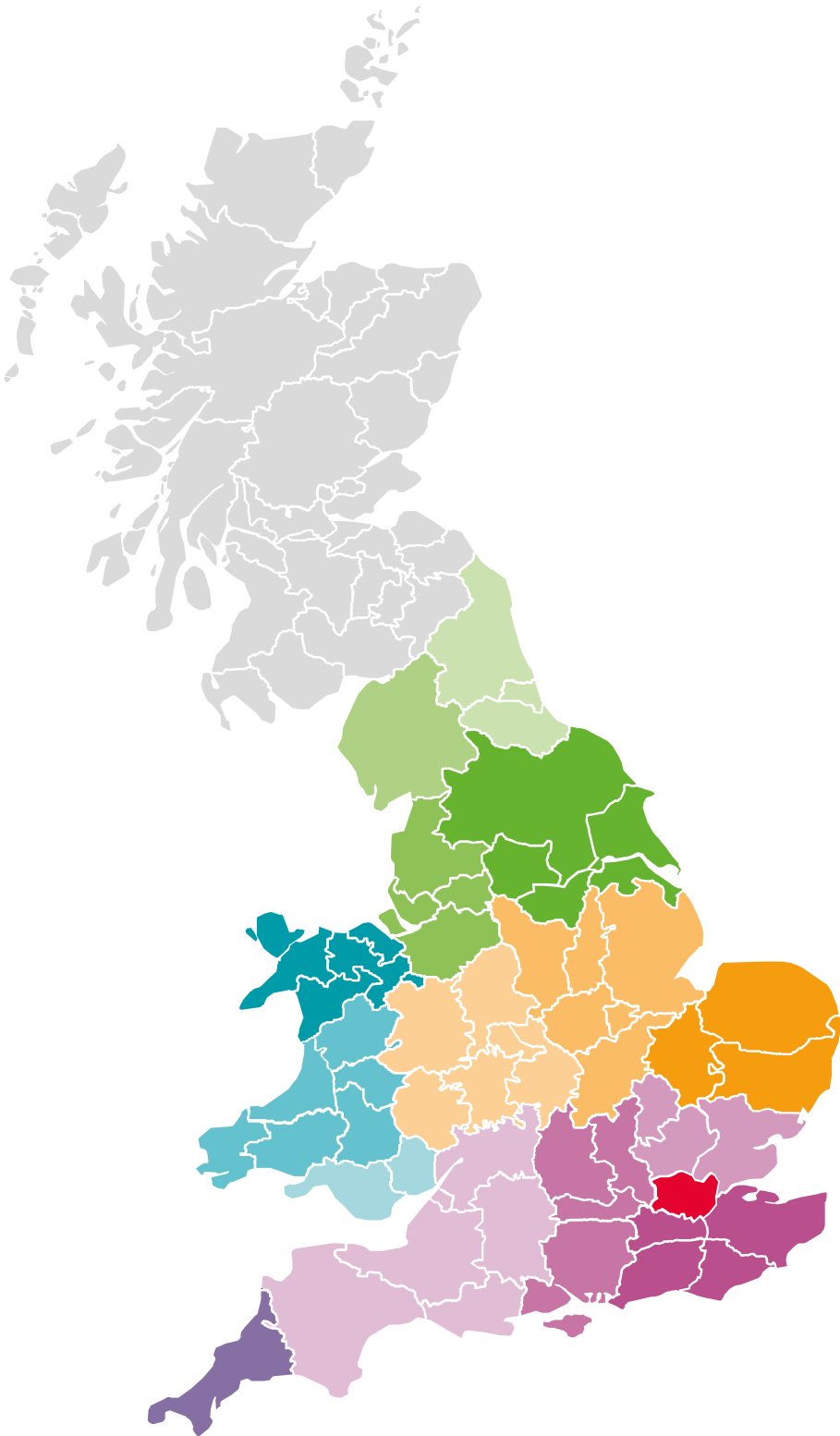
The following suite range is included with product manufacture guarantees:

<div><div>Concrete tiles – interlocking or double lapped</div><div>A minimum of 30 years durability in accordance with BS EN 490.</div><div>Clay tiles – interlocking or double-lapped</div><div>A minimum of 30 years durability in accordance with BS EN 1304.</div></div>	<div><div>Resin-slates – interlocking</div><div>A minimum of 30 years durability in accordance with third party certification from BBA or equivalent UKAS / EA – accredited certification body.</div><div>Natural Slates</div><div>A minimum of 30 years durability in accordance with BS EN 12326-1. Associated roof components include dry fix systems including product manufacturer design guarantees in line with BS 5534.</div></div>
--	---

LHC appointed suppliers

Regional lots

- Greater London
- Home Counties South
- Home Counties West
- Home Counties North
- South West
- Cornwall
- East Anglia
- East Midlands
- West Midlands
- Yorkshire & Humber
- North West
- Cumbria
- North East
- North Wales
- Mid Wales
- South Wales



Value Band 1
£3,000 -£250,000
Value Band 2
Above £250,000

	Greater London		Home Counties South	
	Value 1	Value 2	Value 1	Value 2
Amber Construction Services Ltd		✓		✓
Adlards	✓			✓
Breyer Group PLC		✓		✓
CWG Roofing Ltd	✓			✓
Keepmoat Rengeneration Ltd		✓		✓
Lakehouse Contracts		✓		
M & J Group Ltd		✓		
Maguire Brothers	✓		✓	
R Benson Property Maintenance Ltd	✓			

	Home Counties West		Home Counties North	
	Value 1	Value 2	Value 1	Value 2
Amber Construction Services Ltd		✓		✓
Avonside Roofing Ltd		✓	✓	
Breyer Group PLC		✓	✓	
Keepmoat Rengeneration Ltd		✓		✓
M & J Group Ltd		✓		✓
Maguire Brothers	✓		✓	
R Benson Property Maintenance Ltd	✓		✓	
Synergy Roofing	✓			

	Home Counties West		Home Counties North	
	Value 1	Value 2	Value 1	Value 2
Amber Construction Services Ltd		✓		✓
Avonside Roofing Ltd		✓		✓
Breyer Group PLC		✓		✓
Keepmoat Rengeneration Ltd		✓		✓
M & J Group Ltd		✓		✓
Maguire Brothers	✓		✓	
R Benson Property Maintenance Ltd	✓		✓	
Synergy Roofing	✓			

LHC appointed suppliers

South West			Cornwall		
Value 1			Value 1		
Value 2			Value 2		
Acclaim Contracts Ltd		✓	Acclaim Contracts Ltd		✓
Avonside Roofing Ltd		✓	Avonside Roofing Ltd		✓
M & J Group Ltd		✓	M & J Group Ltd		✓
Mi-Space Ltd		✓	Mi-Space Ltd		✓
Superior Roofing & Building Services Ltd		✓	Superior Roofing & Building Services Ltd		✓

East Anglia			East Midlands		
Value 1			Value 1		
Value 2			Value 2		
Amber Construction Services Ltd		✓	Acclaim Contracts Ltd		✓
Adlards	✓		Aspect (East Anglia) Ltd	✓	
Aspect (East Anglia) Ltd	✓		Avonside Roofing Ltd		✓
Avonside Roofing Ltd		✓	Jennings Roofing Limited		✓
CWG Roofing Ltd	✓		Keepmoat Rengeneration Ltd		✓
Doors Plus Ltd	✓		M & J Group Ltd		✓
Keepmoat Rengeneration Ltd		✓	Rydale Roofing Ltd	✓	
M & J Group Ltd		✓	SBS Group	✓	
Superior Roofing & Building Services Ltd		✓	Sustainable Building Services Ltd	✓	
Synergy Roofing	✓		Synergy Roofing	✓	

Value Band 1
£3,000 -£250,000
Value Band 2
Above £250,000

West Midlands			Yorkshire & The Humber		
Value 1			Value 1		
Value 2			Value 2		
Acclaim Contracts Ltd		✓	A.Connolly Ltd		✓
Avonside Roofing Ltd		✓	Allied Roofing & Construction Ltd	✓	
Greenough & Sons Roofing Ltd	✓		Innercity Roofing Yorkshire Ltd	✓	
Keepmoat Rengeneration Ltd		✓	Hodgson Sayers Ltd		✓
M & J Group Ltd		✓	Keepmoat Rengeneration Ltd		✓
Rydale Roofing Ltd	✓		Lacy Roofing Ltd	✓	
Sustainable Building Services Ltd	✓		M & J Group Ltd		✓
Wates Construction Ltd		✓	SBS Group	✓	
			The Casey Group Ltd	✓	
			Westhoughton Roofing & Pointing Services Ltd		✓

North West			Cumbria		
Value 1			Value 1		
Value 2			Value 2		
A.Connolly Ltd		✓	A.Connolly Ltd		✓
Allied Roofing & Construction Ltd	✓		DLP Services Northern Ltd	✓	
DLP Services Northern Ltd	✓		Hodgson Sayers Ltd		✓
Jackson, Jackson & Sons Ltd		✓	Innercity Roofing Yorkshire Ltd	✓	
Keepmoat Rengeneration Ltd		✓	Keepmoat Rengeneration Ltd		✓
Lacy Roofing Ltd	✓		Lacy Roofing Ltd	✓	
M & J Group Ltd		✓	M & J Group Ltd		✓
The Casey Group Ltd	✓		Sustainable Building Services Ltd	✓	
W Swindells & Son Ltd	✓		Westhoughton Roofing & Pointing Services Ltd		✓
Westhoughton Roofing & Pointing Services Ltd		✓			

LHC appointed suppliers

Value Band 1
£3,000 -£250,000
Value Band 2
Above £250,000

North East		
	Value 1	Value 2
Hodgson Sayers Ltd		✓
Innercity Roofing Yorkshire Ltd	✓	
John Flowers Ltd		✓
Keepmoat Rengeneration Ltd		✓
M & J Group Ltd		✓
SBS Group	✓	
Wensley Roofing Ltd		✓

North Wales		
	Value 1	Value 2
A.Connolly Ltd		✓
Avonside Roofing Ltd		✓
DLP Services Northern Ltd	✓	
G M Jones Ltd	✓	
Greenough & Sons Roofing Ltd	✓	
Keepmoat Rengeneration Ltd		✓
Lacy Roofing Ltd	✓	
M & J Group Ltd		✓
The Casey Group Ltd	✓	
Westhoughton Roofing & Pointing Services Ltd		✓

Mid Wales		
	Value 1	Value 2
A.Connolly Ltd		✓
Acclaim Contracts Ltd		✓
Avonside Roofing Ltd		✓
M & J Group Ltd		✓
Westhoughton Roofing & Pointing Services Ltd		✓

South Wales		
	Value 1	Value 2
Acclaim Contracts Ltd		✓
Avonside Roofing Ltd		✓
Keepmoat Rengeneration Ltd		✓
M & J Group Ltd		✓
Wates Construction Ltd		✓

LHC frameworks provide compliance, quality and best value to clients & members, with a streamlined process for engaging with appointed companies



Framework for Pitched Roofing:

Works separated into:
Value 1: £3,000 - £250,000
Value 2: Above £250,000

This framework is valid until 30th June 2020

T 01895 274850

WWW.LHC.GOV.UK