

SUPPLY AND INSTALLATION OF ALUMINIUM WINDOWS AND DOORS

1ST JUNE 2020 - 31ST MAY 2024



ABOUT THIS FRAMEWORK

This SWPA framework was developed to provide an efficient, value for money procurement route for the design, supply and installation of aluminium windows, doors and curtain walling, for all types of public sector refurbishment and new build projects, including:

- > Small replacement projects
- > Residential - low and high rise
- > Managed leasehold properties
- > Sheltered housing
- > Blue light
- > Public office buildings
- > Community buildings
- > Leisure Centres
- > Educational premises and student accommodation

The tender was carried out in strict accordance with the EU Procurement Directives and UK public sector procurement rules.

Places on the framework were awarded to 3 different suppliers. The framework will run for a maximum of four years. However, individual call-off projects can be completed beyond the four-year duration of the framework as long as a contract is in place prior to the framework expiry date. The term of the framework is from 1st June 2020 to 31st May 2024.

Products to be offered under this Framework will be Aluminium alloy windows and doorsets covered within the scope of BS EN 14351-1, doorsets covered within the scope of BS EN 14351-2 and curtain walling covered within the scope of BS EN 13830.

SWPA provides OJEU compliant frameworks, which can be used by local authorities, social landlords and other public sector organisations to procure works, products and services for the construction, refurbishment and maintenance of social housing, schools and public buildings.

The South West Procurement Alliance brand, which is part of the LHC Group, was launched in October 2019.

Our aims are to work closely with South West clients and appointed companies and to focus on regional priorities. We are a locally based, growing team with offices in Exeter.

LHC was established in 1966 and is acknowledged as one of the most experienced and respected providers of procurement frameworks in the construction sector.

The relationship between the LHC Group and the local SWPA team gives SWPA the unique position of having local knowledge and relationships, while also benefiting from additional resources and expertise from a national framework provider.

South West Procurement Alliance (SWPA)

Third Floor (top floor) | 11-15 Dixs Fields | Exeter | Devon | EX1 1QA

☎ 01392 574 100

✉ info@swpa.org.uk

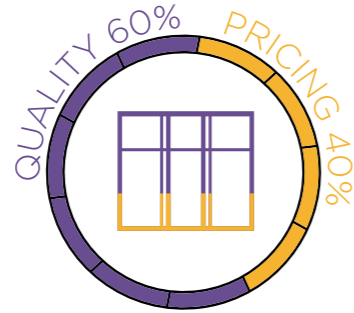
🐦 @SWPAProcure

🌐 South West Procurement Alliance (SWPA)

EVALUATION AWARD WEIGHTING CRITERIA

Quality 60%*

- > Project (Case study) - 6%
- > Professional Qualifications - 4%
- > Regional Capability - 6%
- > Defects Resolution - 5%
- > Contract Management - 5%
- > Programme Management - 5%
- > CDM Compliance - 5%
- > Project support - 5%
- > Installation survey - 4%
- > Social Value - 5%
- > Factory Visit - 10%



Price 40%

- > Profit & overhead costs per project - 20%
- > Scenario costs, including installation costs, product manufacture and supply, project management fees and preliminary costs - 20%

*In addition to quality weighting, Tenderers were requested to provide information on the products, materials and components they were supplying, as well as confirming they would comply with the mandatory requirement for minimum 10-year guarantees and warranties for all products offered under this Framework.



Appointed Companies

Appointed companies may offer more than one system suppliers' aluminium window and door products. Each system proposed carry's third party certification for the specific system and the fabricator.



DETAILS ABOUT PRODUCTS AND SERVICES

A substantial set of aluminium window, doors and curtain walling products is offered alongside consultation and design services from specialist fabricators.

Products and Design Services

Products used in this framework have all been designed to meet the requirements of the latest editions of The Building Regulations including the energy saving requirements - Conservation of Fuel and Power. These include:

- > Fire safety - egress windows and doors
- > Ventilation (including heat producing appliances) - compliant air management products
- > Conservation of fuel and power - energy efficient window and door products to meet and exceed the Window Energy Ratings (WER) band C and U-value requirements for both replacement and new-build projects. WER bands B, A and A+ and triple glazing are available
- > Access to and use of buildings - e.g. special needs hardware and low door thresholds
- > Enhanced security windows and doors To BS EN 1627 to BS EN 1630 relating to burglar resistance are referenced within BS EN 14351-1. For enhanced security requirements, SWPA references PAS 24:2016 to include third-party accreditation (e.g. BSI Kitemark, BM Trada, Q Mark) for the fabricator.
- > Safety in use including child safety
- > High performance glazing including safety (laminated and toughened), self-cleaning and energy efficient glass SWPA appointed companies will offer design advice and support on the interpretation and conformity to statutory regulation requirements including planning assistance.

Products are CE Marked to the harmonised standard relating to performance characteristics for windows and doors - BS EN 14351-1.

A 10-year product and installation guarantee will be provided for SWPA projects. An insurance backed warranty may also be requested at additional cost.

Survey, Installation and Site Management Services

All appointed companies offer a full survey and installation service including programming and resident liaison where required.

Survey and installation will be undertaken to the guidance set out in BS 8213-4 which includes finishing off and making good. For refurbishment projects, existing windows and doors will be removed and responsibly disposed of for recycling.

Services provided on refurbishment projects include:

- > Design advice and support on the interpretation and conformity to statutory regulations requirements, including planning assistance
- > A full survey and installation service, including programming
- > Residents choice exercises and ongoing liaison
- > All installation works and management undertaken to the guidance set out in BS 8213-4



CALL-OFF AWARD OPTIONS

The Framework allows clients the option of:

Direct award without further competition, where all terms and conditions of the call-off project are within the terms and conditions of the framework

OR

Mini-competition, where terms and conditions of the call-off may vary or be modified from the framework or at the choice of the Client.

When calling off projects, clients can use any one of a range of standard forms of building contract including JCT/SBCC, NEC/NEC4, ACE, PPC, TPC, FAC1, or their own in-house agreement.

Eligibility

SWPA is a not-for-profit organisation, governed by public law and a central purchasing body providing procurement services. Publicly funded organisations throughout the South West use SWPA frameworks to procure works, goods and services to construct, refurbish and maintain social housing, schools and public buildings:

- > Local Authorities and any subsidiaries and joint-venture vehicles of those Local Authorities.
- > Registered Social Landlords (RSL), Tenant Management Organisations (TMOs) & Arm's Length Management Organisations (ALMOs)
- > Health Authorities, Councils, Boards and Trusts
- > Publicly Funded Schools
- > Universities and Further Education Establishments
- > Colleges
- > Police Forces
- > Fire and Rescue services
- > Registered Charities

Details of those contracting authorities identified are listed at www.lhc.gov.uk/24/

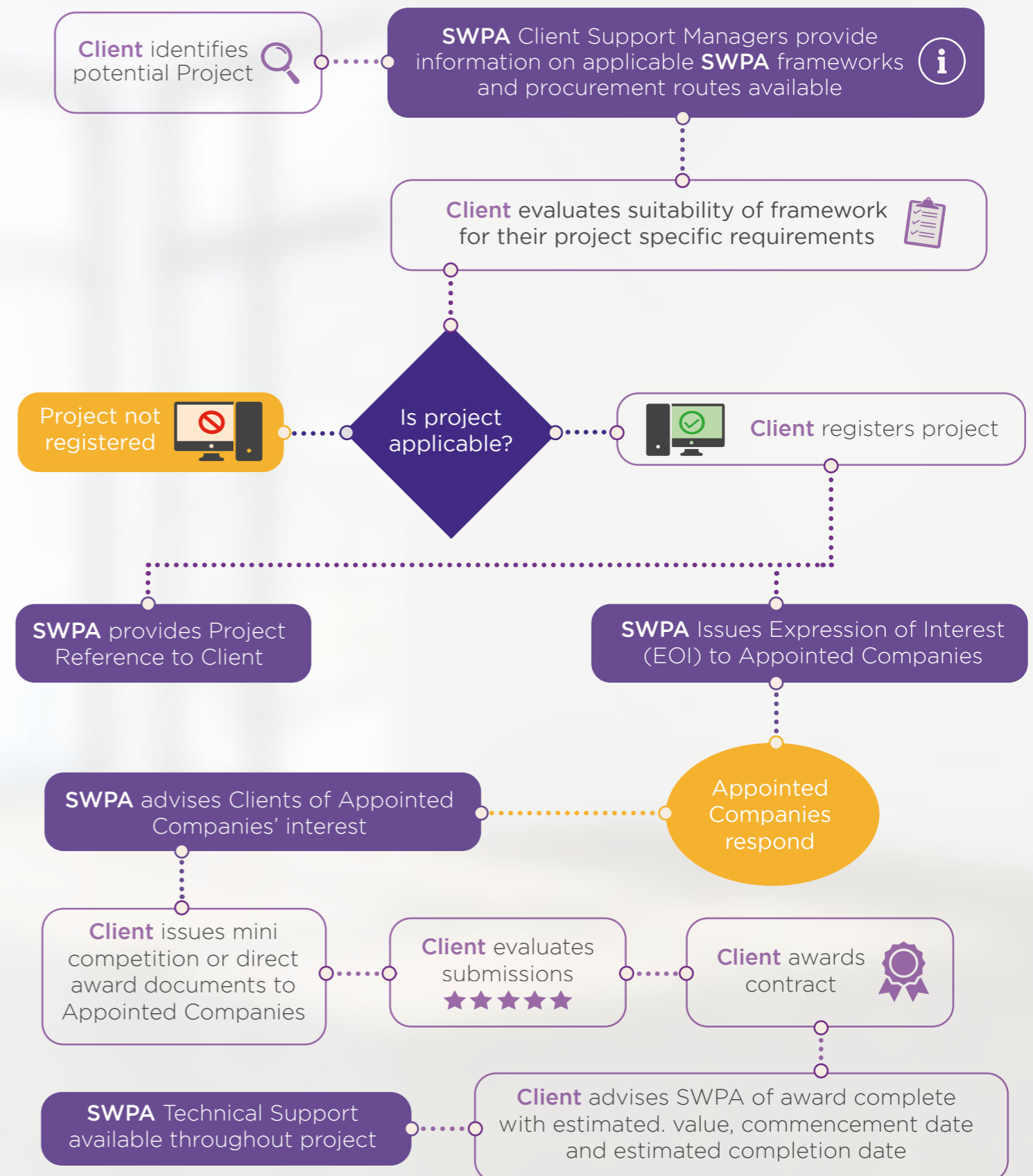
Cost of Accessing the Framework

Although the framework is free to access for our public sector clients, companies appointed to SWPA frameworks are required to pay a small percentage ('the levy') of the total value of every invoice submitted to clients and to submit quotations to clients that are inclusive of the levy. As a not-for-profit organisation, SWPA returns surplus levy income to our clients to support social value initiatives in the local communities they serve.

General Terms and Conditions

LHC uses the FAC-1 standard form of contract to manage our frameworks. The LHC pro forma, which should be read in conjunction with the FAC-1 in published form, details the terms and conditions that govern the operation of the framework, including the procedures to call off projects under the framework. A free copy of the LHC proforma is available upon request. The FAC-1 in standard published form can be purchased at a negotiated rate from ACA, by emailing office@acarchitects.co.uk and quoting discount code reference: LHCFAC2516102017.

THE PROCESS OF USING OUR FRAMEWORK





 01392 574 100

 www.swpa.org.uk

 info@swpa.org.uk

 @SWPAProcure

 [swpa-south-west-procurement-alliance](https://www.linkedin.com/company/swpa-south-west-procurement-alliance)

IN ASSOCIATION WITH:

LHC

Trusted procurement for
better buildings and homes