

ENERGY EFFICIENCY CONSULTANCY SERVICES

1ST JUNE 2020 - 31ST MAY 2024



N8C FRAMEWORK GUIDE

ABOUT THIS FRAMEWORK

SWPA require the provision of Energy Efficiency Consultancy services, to complement our Energy Efficiency Measures and Associated Works (N8) Framework.

As a minimum, Tenderers for N8C were required to have the capability and experience to provide consultancy services for the delivery of the following 21 energy efficiency measures, which form the key services for the N8 Framework Agreement:



SWPA provides OJEU compliant frameworks, which can be used by local authorities, social landlords and other public sector organisations to procure works, products and services for the construction, refurbishment and maintenance of social housing, schools and public buildings.

The South West Procurement Alliance brand, which is part of the LHC Group, was launched in October 2019.

Our aims are to work closely with South West clients and appointed companies and to focus on regional priorities. We are a locally based, growing team with offices in Exeter.

LHC was established in 1966 and is acknowledged as one of the most experienced and respected providers of procurement frameworks in the construction sector.

The relationship between the LHC Group and the local SWPA team gives SWPA the unique position of having local knowledge and relationships, while also benefiting from additional resources and expertise from a national framework provider.

South West Procurement Alliance (SWPA)

Third Floor (top floor) | 11-15 Dixs Fields | Exeter | Devon | EX1 1QA

01392 574 100

info@swpa.org.uk

@SWPAProcure

South West Procurement Alliance (SWPA)

• External wall insulation	• Cavity wall insulation	• Internal wall insulation
• Insulation materials (Loft)	• Biomass boilers	• Solar PV with battery storage
• Air to water heat pumps	• District heating interface units	• Traditional boilers
• Rainscreen and cladding	• Combined heat & power (CHP) or combined cooling & heat & power (CCHP)	• Gas absorption heat pumps
• Boiler optimisation technologies	• Lighting controls	• EV charging infrastructure
• Solar thermal systems	• Building energy management systems	• Floor insulation
• Ground source heat pumps	• Commercial boilers	• Electric heaters

The tender was carried out in strict accordance with the EU Procurement Directive and UK public sector procurement rules.

ABOUT THIS FRAMEWORK

Places on the framework were awarded to 3 different suppliers. The framework will run for a maximum of four years. However, individual call-off projects can be completed beyond the four-year duration of the framework as long as a contract is in place prior to the framework expiry date. The term of the framework is from **1st June 2020 to 31st May 2024**.

In terms of the core services required under this Framework, Appointed Companies will be able to provide the following:

Building Energy Management

- > Building Energy Policy & Strategy Development
- > Energy Surveys and Audits
- > Monitoring and Targeting
- > Independent Report on Metering Arrangements (IRMA)
- > Chartered Surveyors Reports
- > Domestic and non-domestic BREEAM Assessments (for existing buildings)
- > Funding and Finance



Project Management

- > Project Manager
- > Clerk of Works
- > Health & Safety
- > Principal Designer duties
- > Health & Safety Advisors

Asset Management, Project Specification

- > Energy Stock Condition Surveys and Reports
- > Product Specification and Procurement
- > Quantity Surveyors

Building Energy Certificates

- > Display Energy Certificates (DEC) and Advisory Report (AR)
- > Energy Performance Certificates (EPC) Domestic
- > Energy Performance Certificates (EPC) Non-Domestic



The framework is available to be used in the following:

- > Domestic dwellings
- > Managed leasehold properties
- > Sheltered housing and supported housing and care home properties
- > Schools and colleges market rent properties
- > Universities, student accommodation; and other tenures
- > Leisure facilities
- > Public offices (non 24/7 hour operation)
- > Multi-functional/multi-use (24/7 hour operation)
- > Other properties owned or managed by a public body framework end users

EVALUATION AWARD WEIGHTING CRITERIA

Quality 60%

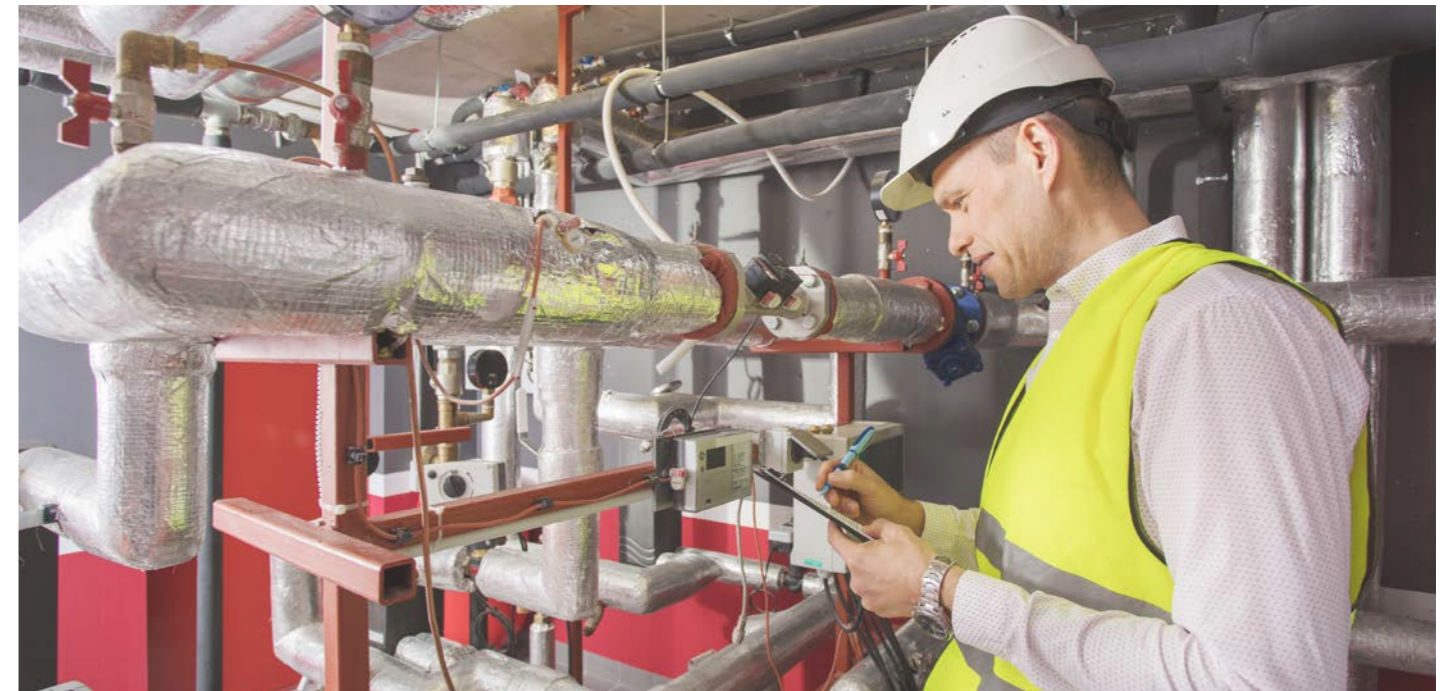
The Technical/Quality questions in the ITT are as follows:

- > Project case study - 15%
- > Framework management and capability - 13%
- > Project resources - 10%
- > Regional capability - 7%
- > CDM compliance - 8%
- > Social value - 7%

Price 40%

The elements of cost used for this particular pricing model were the following:

- > Schedule of Rates e.g. Building Energy Audits, Building Certificates (EPC), Clerk of Works fees etc.
- > Daily and hourly consultancy rates
- > Project management fees
- > Regional uplifts

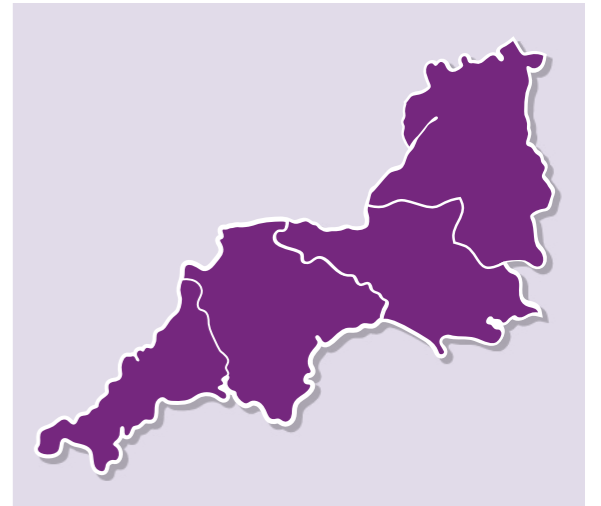


Appointed Companies*

The Appointed Companies below have been appointed, due to their experience in providing consultancy services within energy efficiency and cover all regions in the South West of England.

- > Currie and Brown
- > Drees & Sommer
- > Rybka

*LISTED ALPHABETICALLY



CALL-OFF AWARD OPTIONS

The Framework allows clients the option of:

Direct award without further competition, where all terms and conditions of the call-off project are within the terms and conditions of the framework

OR

Mini-competition, where terms and conditions of the call-off may vary or be modified from the framework or at the choice of the Client.

When calling off projects, clients can use any one of a range of standard forms of building contract including JCT/SBCC, NEC/NEC4, ACE, PPC, TPC, FAC1, or their own in-house agreement.

Eligibility

SWPA is a not-for-profit organisation, governed by public law and a central purchasing body providing procurement services. Publicly funded organisations throughout the South West use SWPA frameworks to procure works, goods and services to construct, refurbish and maintain social housing, schools and public buildings:

- > Local Authorities and any subsidiaries and joint-venture vehicles of those Local Authorities.
- > Registered Social Landlords (RSL), Tenant Management Organisations (TMOs) & Arm's Length Management Organisations (ALMOs)
- > Health Authorities, Councils, Boards and Trusts
- > Publicly Funded Schools
- > Universities and Further Education Establishments
- > Colleges
- > Police Forces
- > Fire and Rescue services
- > Registered Charities

Details of those contracting authorities identified are listed at www.lhc.gov.uk/24/

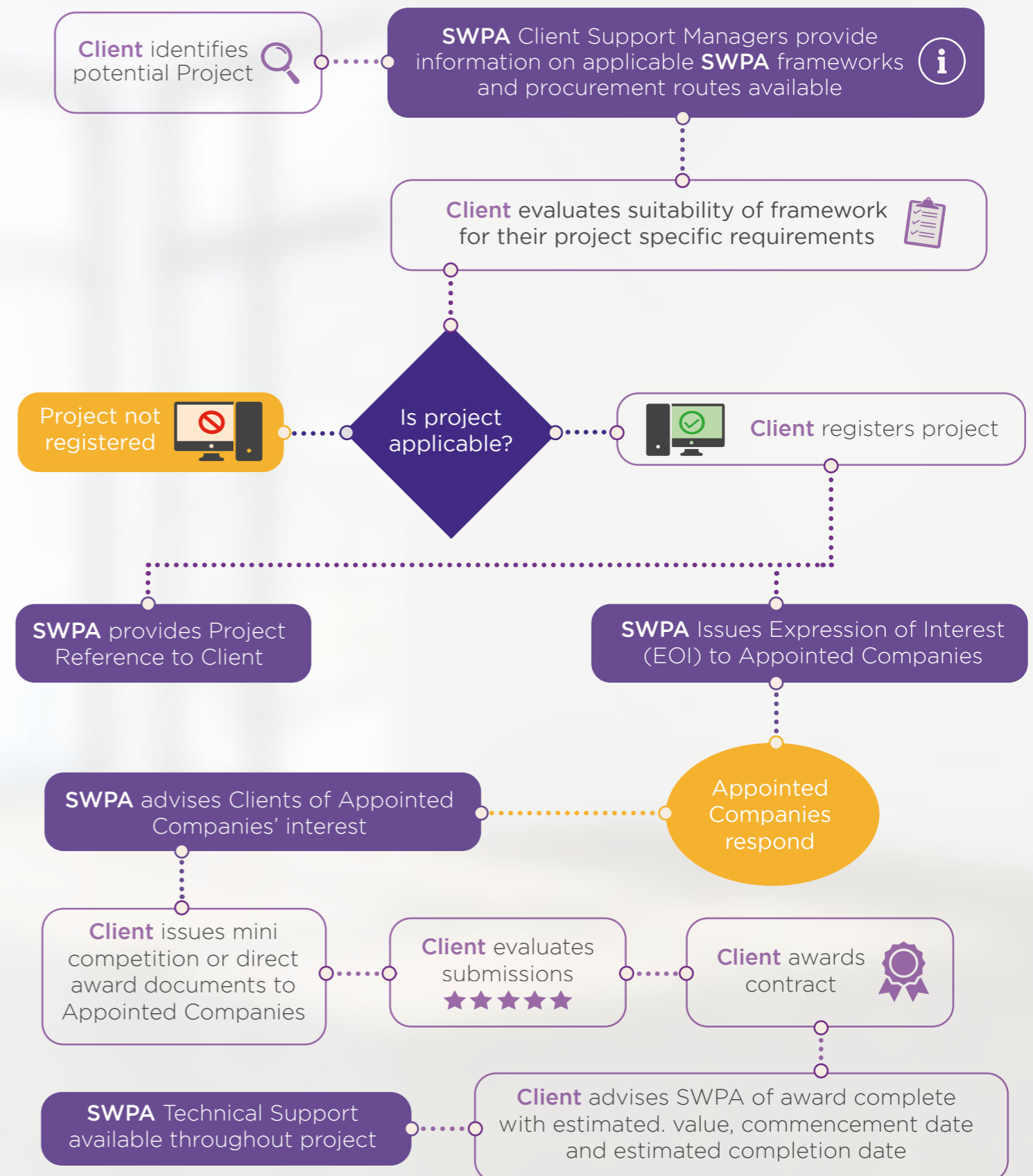
Cost of Accessing the Framework

Although the framework is free to access for our public sector clients, companies appointed to SWPA frameworks are required to pay a small percentage ('the levy') of the total value of every invoice submitted to clients and to submit quotations to clients that are inclusive of the levy. As a not-for-profit organisation, SWPA returns surplus levy income to our clients to support social value initiatives in the local communities they serve.

General Terms and Conditions

LHC uses the FAC-1 standard form of contract to manage our frameworks. The LHC pro forma, which should be read in conjunction with the FAC-1 in published form, details the terms and conditions that govern the operation of the framework, including the procedures to call off projects under the framework. A free copy of the LHC proforma is available upon request. The FAC-1 in standard published form can be purchased at a negotiated rate from ACA, by emailing office@acarchitects.co.uk and quoting discount code reference: LHCFAC2516102017.

THE PROCESS OF USING OUR FRAMEWORK





 01392 574 100

 www.swpa.org.uk

 info@swpa.org.uk

 @SWPAProcure

 [swpa-south-west-procurement-alliance](https://www.linkedin.com/company/swpa-south-west-procurement-alliance)

IN ASSOCIATION WITH:

LHC

Trusted procurement for
better buildings and homes